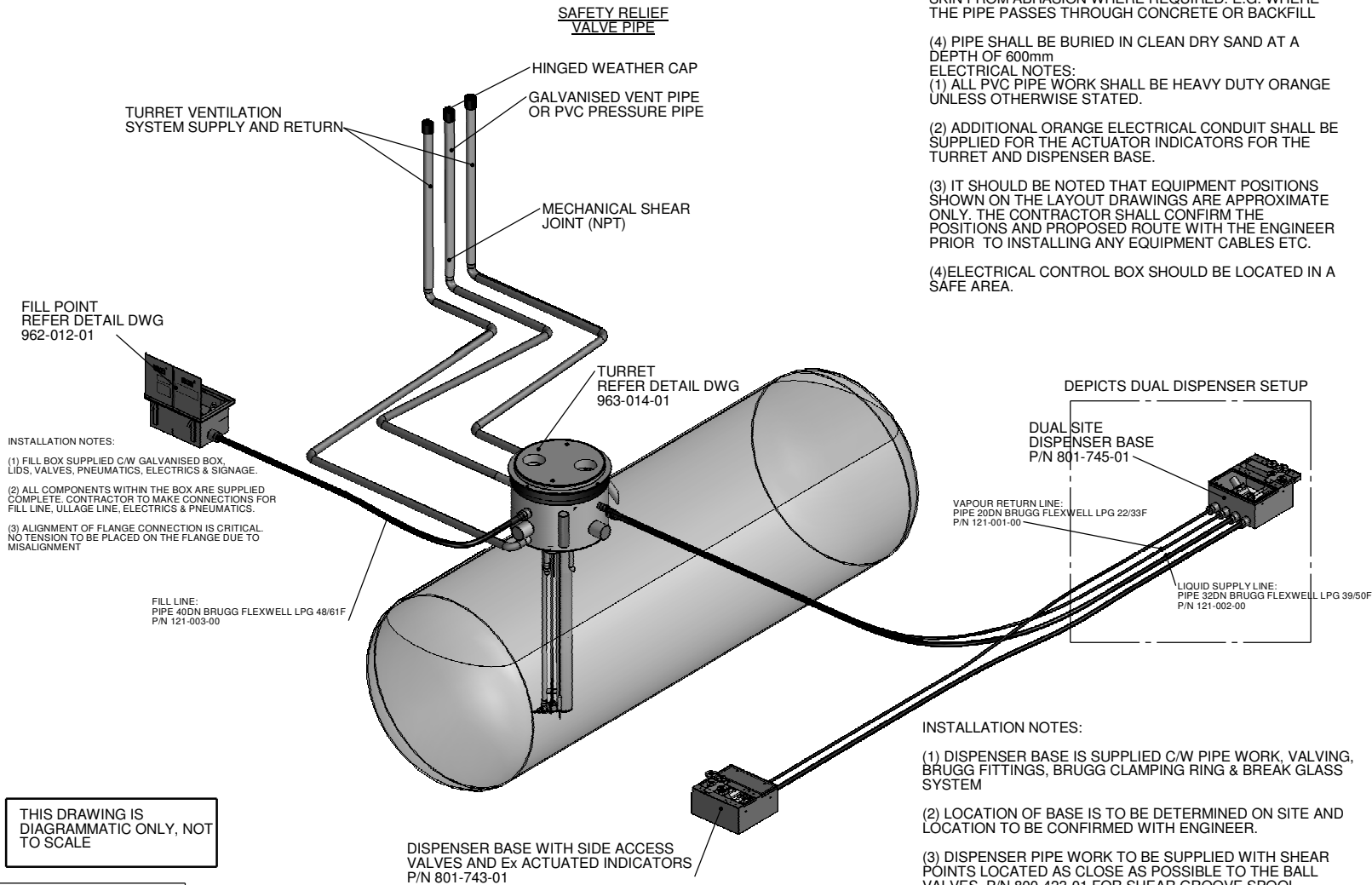


REFERENCE DRAWINGS	DESCRIPTION
963-014-01	TURRET & TANK ASSEMBLY WITH ACTUATED INDICATORS
962-012-01	FILL BOX
801-744-01	DISPENSER BASE WITH ACTUATED INDICATORS



MECHANICAL NOTES:
 (1) THE USE OF BRUGG FLEXWELL PIPE DOESN'T REQUIRE THE USE OF CATHODIC PROTECTION.
 (2) NO JOINTS SHALL BE BURIED FLANGED OR SCREWED.
 (3) BRUGG PIPE SHALL BE WRAPPED WITH ABRASION RESISTANT CLOTH TO PROTECT POLYETHYLENE SKIN FROM ABRASION WHERE REQUIRED. E.G. WHERE THE PIPE PASSES THROUGH CONCRETE OR BACKFILL
 (4) PIPE SHALL BE BURIED IN CLEAN DRY SAND AT A DEPTH OF 600mm
ELECTRICAL NOTES:
 (1) ALL PVG PIPE WORK SHALL BE HEAVY DUTY ORANGE UNLESS OTHERWISE STATED.
 (2) ADDITIONAL ORANGE ELECTRICAL CONDUIT SHALL BE SUPPLIED FOR THE ACTUATOR INDICATORS FOR THE TURRET AND DISPENSER BASE.
 (3) IT SHOULD BE NOTED THAT EQUIPMENT POSITIONS SHOWN ON THE LAYOUT DRAWINGS ARE APPROXIMATE ONLY. THE CONTRACTOR SHALL CONFIRM THE POSITIONS AND PROPOSED ROUTE WITH THE ENGINEER PRIOR TO INSTALLING ANY EQUIPMENT CABLES ETC.
 (4) ELECTRICAL CONTROL BOX SHOULD BE LOCATED IN A SAFE AREA.

GENERAL NOTES:

- 1) THESE DRAWINGS HAVE BEEN PREPARED IN ACCORDANCE WITH AUSTRALIAN STANDARDS.
- 2) ALL MATERIAL AND WORKMANSHIP SHALL CONFORM TO THE LAST EDITIONS OF AUSTRALIAN STANDARDS AND DANGEROUS GOODS ACTS. ALL WORK SHALL BE TO THE SATISFACTION OF THE SUPERINTENDENT.
- 3) ALL WORK SHALL BE UNDERTAKEN IN ACCORDANCE WITH SAFETY REQUIREMENTS (REFER COMPANY STANDARD TECHNICAL SPECIFICATION STD-D905, SECTION 1) ALL EMPLOYEES ARE TO BE FAMILIAR WITH, AND OBEY THESE REQUIREMENTS.
- 4) ALL DIMENSIONS SHOWN ON DRAWINGS ARE IN MILLIMETRES UNLESS NOTES OTHERWISE.
- 5) ALL STANDARD DRAWINGS SHALL BE READ IN CONJUNCTION WITH PROJECT SPECIFIC DRAWINGS.
- 6) THE CONTRACTOR SHALL PROVIDE ALL NECESSARY MATERIALS AND LABOUR, WHETHER OR NOT DETAILED ON THE DRAWINGS, TO SATISFACTORILY COMPLETE THE INSTALLATION.
- 7) IN SOME STATES, STATUTORY REGULATIONS MAY REQUIRE MODIFICATIONS AND/OR ADDITIONAL WORK TO BE UNDERTAKEN TO THAT SPECIFIED ON THESE DRAWINGS. IN SUCH CASES ALL WORK SHALL BE CARRIED OUT IN STRICT ACCORDANCE WITH THE REQUIRED LOCAL REGULATIONS.
- 8) IN ADDITION TO ANY STATUTORY AND THE COMPANY SPECIFIED REQUIREMENTS, ALL WORK SHALL COMPLY WITH THE REQUIREMENTS OF THE FLEXIBLE PIPE OR COMPONENT MANUFACTURER. IN THE EVENT OF ANY CONTRADICTION OR INCOMPATIBILITY BETWEEN THE MANUFACTURER'S REQUIREMENTS AND THE COMPANY/STATUTORY REQUIREMENT, THE SUPERINTENDENT SHALL DETERMINE PRECEDENCE.

INSTALLATION NOTES:
 (1) FILL BOX SUPPLIED C/W GALVANISED BOX, LIDS, VALVES, PNEUMATICS, ELECTRICS & SIGNAGE.
 (2) ALL COMPONENTS WITHIN THE BOX ARE SUPPLIED COMPLETE. CONTRACTOR TO MAKE CONNECTIONS FOR FILL LINE, ULLAGE LINE, ELECTRICS & PNEUMATICS.
 (3) ALIGNMENT OF FLANGE CONNECTION IS CRITICAL. NO TENSION TO BE PLACED ON THE FLANGE DUE TO MISALIGNMENT

THIS DRAWING IS DIAGRAMMATIC ONLY, NOT TO SCALE

TOLERANCE TABLE	
LINEAR	
0 TO 6	±0.1
6 TO 30	±0.2
30 TO 120	±0.3
120 TO 315	±0.5
315 TO 1,000	±1.5
OVER 1,000	±3
ANGULAR	±0.1°
FLATNESS & STRAIGHTNESS	±0.2
RUNOUT	±0.2
SCREW THREADS AS1275	
REF PROCEDURE QWI-0022	

REV.	DESCRIPTION	DATE	DRAWN	APPROVED
A	INITIAL RELEASE	2/11/2012	SOP	JRB

MATERIAL:	N/A
FINISH:	N/A
DRAWN TO AS 1100.101 ALL DIMENSIONS IN MILLIMETERS	

BATCHEN	
2-6 Raglan Road Auburn 2144, Australia Ph:61-2-9644 7444 - Fax: 61-2-9645 1665 www.batchen.com.au	
DRAWN: SOP	CHECKED: JRB
DATE: 02-11-2012	APPROVED: JRB
SCALE: SCALE	

THIS DRAWING IN DESIGN AND DETAIL IS THE CONFIDENTIAL PROPERTY OF D. J. BATCHEN PTY LTD AND MUST NOT BE REPRODUCED, USED BY OR DISCLOSED TO OTHERS WITHOUT THE PRIOR AUTHORISATION OF D. J. BATCHEN PTY LTD	
Title:	
SITE LAYOUT SPECIFICATION - BRUGG	
DRG. NUMBER: 800-116-01	REV A A3